



TILBURG UNIVERSITY

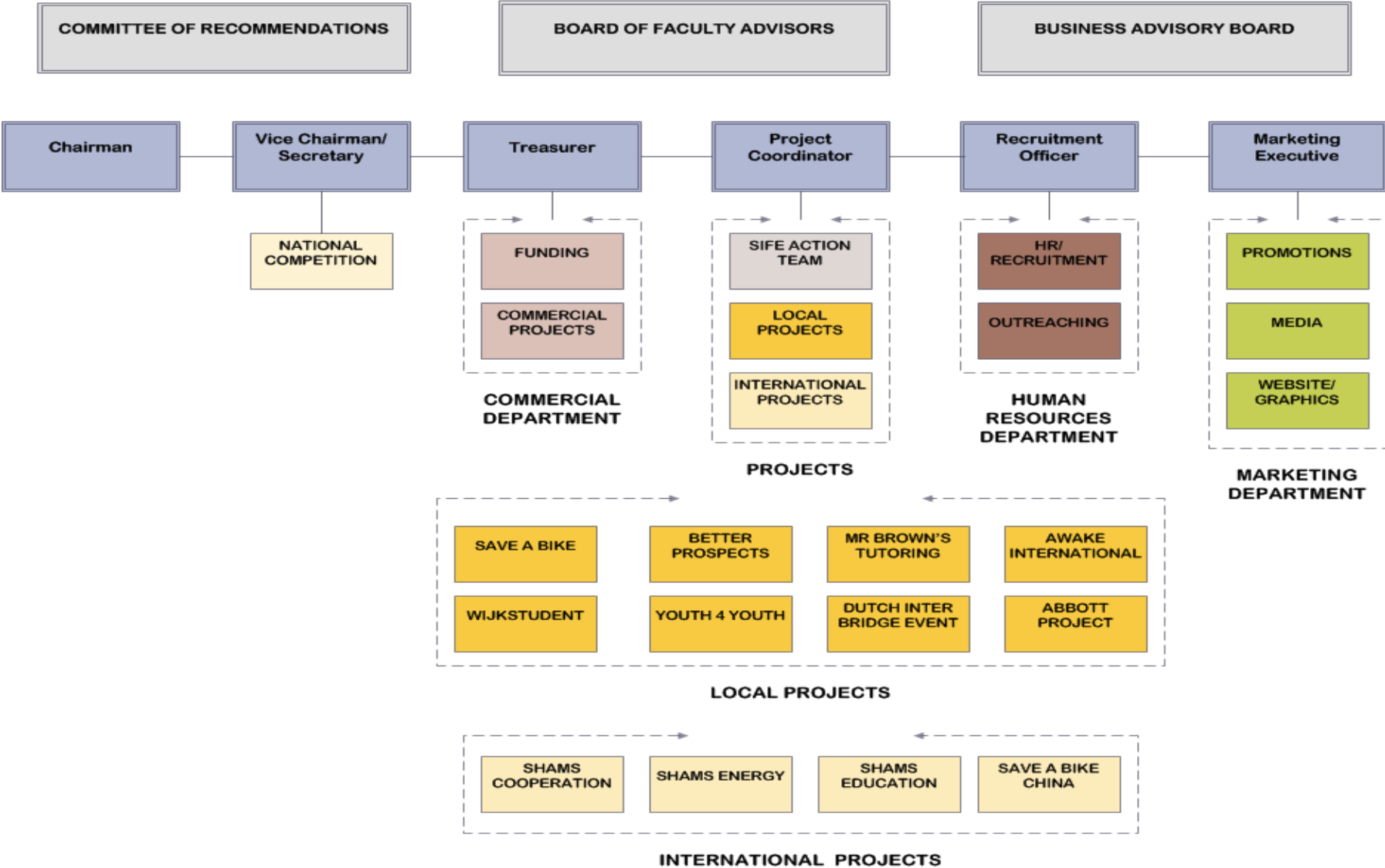
VACANCIES

DEPARTMENT POSITION DESCRIPTIONS

2011-2010

***“The entire team is accountable for what they deliver,
the leaders in the team inspire the team to take
responsibility”.***

SIFE TILBURG UNIVERSITY ORGANIZATIONAL CHART



HUMAN RESOURCE DEPARTMENT

The HR Department of SIFE Tilburg consists of **three** teams that all are accountable for training, recruiting and allocation of people within different project and support teams. The **Secretary** of the Board of SIFE Tilburg oversees this department.

Outreaching Team

- Coordinates students from the Outreaching Program and allocates them to various Project Teams.
- Keeps track of Alumni members and getting them involved in current projects.

Recruitment Team

- Responsible for recruiting new SIFE members.
- Allocating the right people in the right positions.
- Organizing two recruitment fairs per year.

COMMERCIAL DEPARTMENT

The Business Development Department of SIFE Tilburg consists of **two** teams. These two teams deal with the commercial side of SIFE Tilburg, namely Funding and the Commercial Projects. The **Treasurer** of the Board of SIFE Tilburg oversees this department.

Commercial Projects Team

- Special team within SIFE Tilburg with that is profit driven.
- Creative and entrepreneurial spirit
- Responsible for creating small scale “businesses” to generate income for the whole team.

Funding

- Works in cooperation with the Treasurer, to obtain funding from Sponsors.
- Creating strategic approach to make contact with business partners and sponsors.

MARKETING DEPARTMENT

The Marketing Department of SIFE Tilburg consists of **four** teams that all are accountable for all marketing activities for the SIFE Tilburg Team in general as well as for supporting the Project Teams. The **Marketing Director** of the Board of SIFE Tilburg oversees this department.

Promotion Team

- Organizes promotion campaigns to create awareness of SIFE Tilburg on campus and in the Tilburg community.
- Responsible for acquiring physical locations of promotion events.

Website/Graphics team

- Responsible for the visuals of all material.
- Update website and keeping social network profiles up-to-date
- Creating graphical/multimedia promotional material (flyers, videos etc.)
- Create annual report.
- Works together with NC team for annual National Competition.

Media Team

- Maintains contact with the local/university newspapers.
- Writes press releases to be distributed.
- Responsible for all written material for SIFE Tilburg.